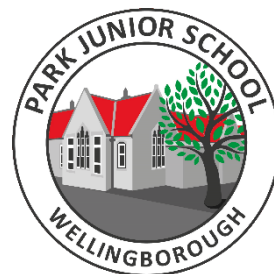


Year 6 Newsletter

Autumn term 2025



Welcome to Year 6 at Park Junior School!

It is a very special final year at the school for your child as they continue to develop and learn.

We welcome Ms Susanne Miller into Year 6 along with her teaching assistant, Mrs Linda Ager. The class teachers for 6HM/JM are Miss Hannah Morris (Mon – Tues) and Mrs Jen McMahon (Wed – Frid) with Mrs Ashley Howes as the teaching assistant.

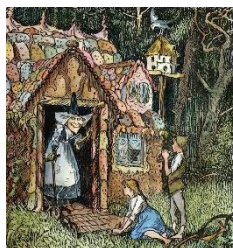
We are very excited to be able to run morning groups again this year for English and Maths and Mrs Jenny May will take one of the groups also. These groups allow for really focused teaching in the core subjects in Year 6, which give the children the opportunity to be the best they can be ready for the SATs and Secondary school.

Each group is a group of only 20 children allowing for more bespoke teaching and both classes are mixed into these groups which means that as well as being an advantage for their learning, the children also have the valuable experience of working with different peers and teaching staff, in different rooms ready for the changes they will experience when they move to secondary school.

We look forward to our week in Wales with many of the children and the children staying at school will also have a fun filled week on the theme of Wales. We also have bikeability week this term, so our year starts off with plenty to look forward to!

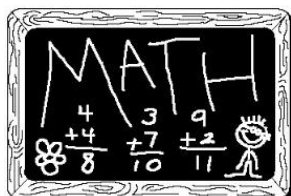
THE CURRICULUM

In English we will;



- Study the traditional fairy Tale '*Hansel & Gretel*' to enable us to focus on **descriptive narrative writing** (characters and settings) and **diary writing** in particular.
- Look at information books and use the features of non-fiction writing in our own **non-chronological writing** alongside the text '*The Jungle book*'
- Visit the skills needed to read aloud and understand our **reading** such as retrieval, inference, use of vocabulary, predictions, author intentions etc through the use of the text '*Blackout*' by Tony Bradman and '*Room 13*' by Robert Swindells. It is very important that the children read as much as they can and we welcome opportunities being provided at home and will be ensuring there are as many opportunities for individual reading as possible at school.
- We will continue to focus on grammar, handwriting and spelling.

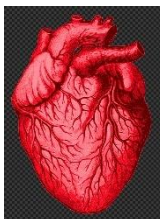
In Maths we will;



- Ensure place value including rounding is secure.
- Work with numbers eg multiples, factors, prime numbers.
- Calculate area and perimeter.
- Convert units of measure.
- Compare, classify and draw 2D shapes.

- Work with negative numbers.
- Calculate proportions.
- Measure, draw and calculate angles.
- Compare and find equivalent fractions.
- In arithmetic, develop all formal methods of calculation.
- Practise and develop problem solving and reasoning skills to apply to a variety of mathematical problems on a daily basis.
- Regularly visit the multiplication tables. (Regular practise at home would be hugely beneficial also)

In Science we will;



'Circulatory Systems & Healthy Lifestyles'

- Explore the structure and function of the blood, heart and blood vessels which together make up the circulatory system.
- Understand how oxygen, nutrients and water are transported around the body and how oxygen and nutrients are essential in helping to provide all parts of the body with energy.
- Learn about the links between lifestyle and the relative health of our bodies
- Explore the effects of exercise (or the absence of it), diet and drugs. We will investigate the key roles of the major food groups and be able to explain the importance of maintaining a balanced diet.

'Evolution & Inheritance'

- Investigate the concept of variation by exploring differences between individuals of the same species and will learn how characteristics are inherited from one generation to the next.
- Describe how animals and plants adapt to changes in their environment to increase their chances of survival. We will learn that these changes are a result of natural selection and that - over long periods of time - this can result in the evolution of new species, as described by Charles Darwin in his book, 'On the Origin of Species'.
- Understand the importance of fossils and how they provide evidence for the theory of evolution. We will find out why Mary Anning was so influential in this field.

In History we will;



Focus on the impact **WWII** had on Britain.

- Look at the background and origins of World War Two, focusing on the aftermath of World War One and the uneasy situation that the world found itself in at this time.
- Identify the events of the 1920s and 1930s which led to the outbreak of World War Two.
- Study key people and nations involved in the war, as well as the efforts made in Britain to protect its people, such as rationing and evacuation.
- Identify some of the key events of World War Two, as well as the many different people who were part of the nation's war effort and consider how these people all helped the war effort in very different ways.

In Geography we will;



Focus on the **Continent of Africa**

- Establishing our perceptions of the continent of Africa by exploring a number of images.
- Each lesson study a particular physical or human aspect of geography and will establish that Africa is a more diverse place than is stereotypically perceived.
- Be aware of the variation in terrain, climate, economy and distribution of resources.
- Have access to a range of sources such as maps, charts, diagrams and reading material.

In Religion & World Views we will;

(Following the new Northamptonshire Agreed Syllabus 2025)

Learning through 'Philosophy', 'Theology' and 'Social Sciences'.



'Are Science and religion in conflict when it comes to the creation?' (Philosophy)

- Develop an understanding of and begin to contrast the various sources that shape worldviews and understand the context of these sources.

'What do Hindus believe about the cycle of life and death? How does it impact their lives? (Social Sciences)

- Consider own perspectives (as well as other worldviews we have learned) about beliefs around what may happen when someone dies and what types of practices and rituals may take place after a death.

In Computing we will;



- look at **3D Models** - Developing knowledge and understanding of using a computer to produce 3D models. Work in a 3D space, including combining 3D objects and examining the differences between working digitally with 2D and 3D graphics. Making accurate 3D models of physical objects.
- Look at **Communication in Computing Systems and Networks** - Explore how data is transferred over the internet, data packets, how the internet facilitates online communication and collaboration, evaluate different methods of communication, how to communicate responsibly by considering what should and should not be shared on the internet.
- Regularly visit e-safety units to ensure all children are aware of the dangers of the internet and how to be safe.
- Use the Office tools regularly across the curriculum.

In PE we will;



- Develop skills and play games in Netball, Tag Rugby, Basketball, Multiskills and Gymnastics.

In Art and DT we will;



- Develop drawing skills inspired by still life and develop sculpture inspired by the African culture.
- Use our art skills to produce a high quality piece of art to go with work from the curriculum.
- Learn about where food has come from and make our own Bolognese sauce through the skills of analysing current sauces, designing our own, making a sauce and evaluating our product.

Other subjects covered; Music, Drama, PHSE and French

Other Information

- Homework will be set weekly (an English (Grammar) and a Maths) after the Wales week. All children will be given a homework book. Work is set on a Wednesday and both pieces MUST be returned by the following Tuesday. The homework will follow work completed in previous lessons so will not be new, but will reinforce previous learning. We expect all children to hand their books in on time and to take pride in the presentation of their work.
- Children continue to come to school in their PE kits on PE days. Currently the days are Monday and Wednesday. Children are expected to wear white shirts and their school jumpers, black shorts/track suit bottoms and trainers to follow school uniform. In the winter we will continue with PE outside so warm PE clothes are important on those days. When the children have a sports club they are expected to wear school uniform during the day and then change for the club.
- No Jewellery or smart watches are to be worn in school except stud earrings.

The year 6 team are very excited to be working with our new year 6 children and families. We are very much looking forward to our year and if there are any queries or worries, please don't hesitate to talk to us and we are always happy to help in any way we can.

Best wishes

The year 6 team.