

Park Junior School

Together We Make A Difference

Head Teacher Mr David Tebbutt

Deputy Head Mrs Jenny May



Great Park Street, Wellingborough,
Northamptonshire, NN8 4PH

Tel: 01933 224 501

Fax: 01933 277 976

www.parkjuniorwellingborough.co.uk

head@park-jun.northants-ecl.gov.uk

Welcome to your first newsletter from the staff of Year 3.

We hope you have had a fantastic summer holiday, have remained safe, healthy and enjoyed some quality family time. We are delighted how quickly the children have settled into Park and immersed themselves into their learning. In this newsletter we hope to inform you of the exciting areas your child will be covering throughout these next two terms leading up to Christmas. Mrs Jo Whiting, Mrs Katherine Young & Mrs Nanette Moore

English

The children will be working on a diversity of fiction and non-fiction genres along with targeted spelling lessons. We will begin the term by studying a text called 'Lizzy & the Cloud' by the Fan Brothers. Then we focus on the book The First Drawing by Mordicai Gerstein. During this period, your child will be assessed in all areas of English and after perusal of their assessments, if needed, your child will have the intervention of our phonics programme called, Read, Write Inc. If your child is competent in this area, then they will focus on reading, comprehension and reading fluency. Furthermore, using our levelled scheme called 'Project X', once allocated, these books will be able to go home but will be needed, for focused groups, each school day.



Maths

Each morning the children will concentrate on deconstructing word problems when they come into class. Then in the maths lesson, we follow the White rose scheme of work, and your child will be focusing on Number and the areas of place value, addition & subtraction, multiplication & division and the area of measures particularly looking at length and Geometry and angles. Additionally, your child will participate in a multiplication focus using the app 'TT Rockstars'. They can access this at school and at home and log ins will follow shortly.



Science

This term the children will be studying 'light & shadows'. They will look at what happens when an object is placed in front of a light source, thus creating shadows. They will investigate, observe and find patterns in the way that the size of a shadow changes by moving a light source and they will gain the knowledge that to see objects we need light and that without it, we get dark. During the topic, children will learn and recognise that the light from the Sun can be dangerous and that we can protect our eyes from the Sun.



At Park Junior School, our school values underpin everything we do and are core to the ethos of our school. Our aim is to develop a community of learners who **persevere** and demonstrate **ambition** and **responsibility** in their work and daily school life, but who also show **kindness** towards one another.

Park Junior School

Together We Make A Difference

Head Teacher Mr David Tebbutt

Deputy Head Mrs Jenny May



Great Park Street, Wellingborough,

Northamptonshire, NN8 4PH

Tel: 01933 224 501

Fax: 01933 277 976

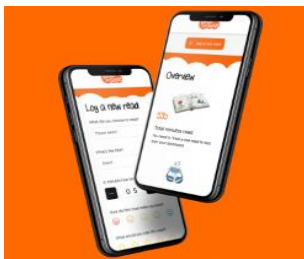
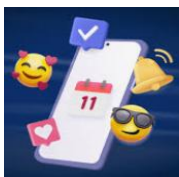
www.parkjuniorwellingborough.co.uk

head@park-jun.northants-ecl.gov.uk

Computing

The children will begin the term enhancing their understanding of the internet through learning about E-safety and using 'common sense education' in conjunction with PSHCE. We will introduce the classes to our computer systems by giving the children their own individual logins and then progress onto exploring of the internet and the school website

www.parkjuniorwellingborough.co.uk) Then finally, the children will focus on digital writing thorough our embedded unit and then move onto connecting computers. Additionally, your child will be expected to 'track their read' using their own personalised code.



HISTORY, GEOGRAPHY & PSHCE

We start the year with our transition unit called 'Being Me'. This is linked to our PSHCE, Well-being and computing lessons. The children will be exploring, researching, and gathering information about themselves and their new school. They will continue with weekly PSHCE lessons on the themes of 'being me in my world' & 'celebrating differences'. Furthermore, each week your child will partake in lessons on the British values and our school values.

Once the transition unit is completed, will begin to explore the history of 'The stone age to the Iron age. After the half term, your child will then begin Geography and study the UK under the theme of 'From North to South' & how spaces in England are different. All these units will be linked heavily to a diversity of subjects including homework, and we hope that these topic themes will be thoroughly enjoyed by the children.



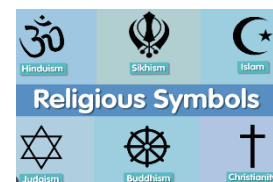
FRENCH

The children will be introduced to learning the French language through language angels. Over the two terms they will focus on Phonetics 1 & 2, & Animals.



Religion & Worldviews

The children will begin their learning focusing on 'Diversity within Hindu Dharma': What do Hindus believe and how may they live? Then after half term they explore the area of 'How and Why are people welcomed into different communities?'



At Park Junior School, our school values underpin everything we do and are core to the ethos of our school. Our aim is to develop a community of learners who **persevere** and demonstrate **ambition** and **responsibility** in their work and daily school life, but who also show **kindness** towards one another.

Park Junior School

Together We Make A Difference

Head Teacher Mr David Tebbutt

Deputy Head Mrs Jenny May



Great Park Street, Wellingborough,
Northamptonshire, NN8 4PH

Tel: 01933 224 501

Fax: 01933 277 976

www.parkjuniorwellingborough.co.uk

head@park-jun.northants-ecl.gov.uk

Music

The children will be exploring and learning how to sign the song, 'Let your spirit fly' and participating in the forthcoming Christmas production. More information on this to follow.



Design Technology

Your child will focus on the area of 'textiles' in the second term and they will be taught to design and cut the template for a cushion, building on the skills they learnt in key stage one. They will use a cross-stitch to join two pieces of fabric together and use both cross stitch and appliqué to decorate the cushion face. They will have the opportunity to investigate, design, make and evaluate their own cushion against a given design criterion, whilst discussing adaptations that may need to be made.



Physical Education

This term Year 3 will have two sessions of PE. Both classes will have P.E. on a Thursday and a Friday. It is paramount for our P.E. lessons, that the children attend school **wearing** their **P.E. kit** which should consist of shorts, a white t-shirt, and trainers. Additionally, your child is also permitted to **wear** an **outside P.E. kit** which can be jogging bottoms and a sweatshirt. We also stipulate that children **do not wear** jewellery/watches, etc on these days. P.E is an important part of the curriculum as it promotes a healthy lifestyle, also team building values and the acquisition of new skills.



Home Learning

Spellings - Children will have focused spelling lessons with targeted words to learn at home, and these will be given to your child on a Friday. The folders containing the practised words, needs to be brought back into school the following Friday when your child will then participate in spelling test on this day.

Reading - To encourage reading for pleasure and to support their progress, we ask that the children read as regularly as possible, ideally daily. Please ensure your child records every time they read on the 'track my reading' website. Reading will be checked on a regular basis and children rewarded in assembly on their achievements.

Homework - This will be set using a format where the children are able to use creative opportunities within their learning logbook. The children will have the Learning Log format within their book, on specific topics which has been covered in class. Homework will be explained to your child and will be due back in on a specified date.

At Park Junior School, our school values underpin everything we do and are core to the ethos of our school. Our aim is to develop a community of learners who **persevere** and demonstrate **ambition** and **responsibility** in their work and daily school life, but who also show **kindness** towards one another.